



PI 500 - Hand-held instrument for industry

The new PI 500 is an all-purpose hand-held measuring instrument for many applications in industry like e. g.:

- **Flow measurement**
- **Pressure/vacuum measurement**
- **Temperature measurement**
- **Moisture/dew point measurement**

The graphic indication of colored measurement curves is inimitably.

Up to 100 million measured values can be stored with date and name of measuring site. The measured values can be transferred to the computer by means of a USB stick. The data can be comfortably evaluated with the CS Basic software.

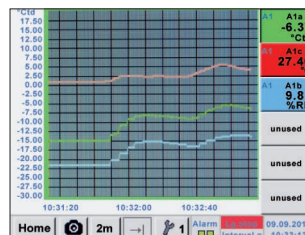
Measured data and service reports can be issued easily and quickly. The following sensors can be connected to the freely configurable sensor input of PI 500:

- Pressure sensors (high and low pressure)
- Flow sensors, VA 500/520
- Temperature sensors Pt 100, Pt 1000 / 4...20 mA
- Dew point sensors FA 510
- Effective power meters
- Optional third-party sensors with the following signals: 0...1/10 V, 0/4...20 mA, Pt 100, Pt 1000, pulse, Modbus



Special features:

- Universal sensor input for lots of common sensor signals
- Internal rechargeable Li-Ion batteries (approx. 12h continuous operation)
- 3.5" graphic display / easy operation via touch screen
- Integrated data logger for storage of the measured values
- USB interface for reading out via USB stick
- International: Up to 8 languages selectable



Measurement curves are indicated graphically and thus the user can see the behavior of the dryer at a glance since the start of the measurement.

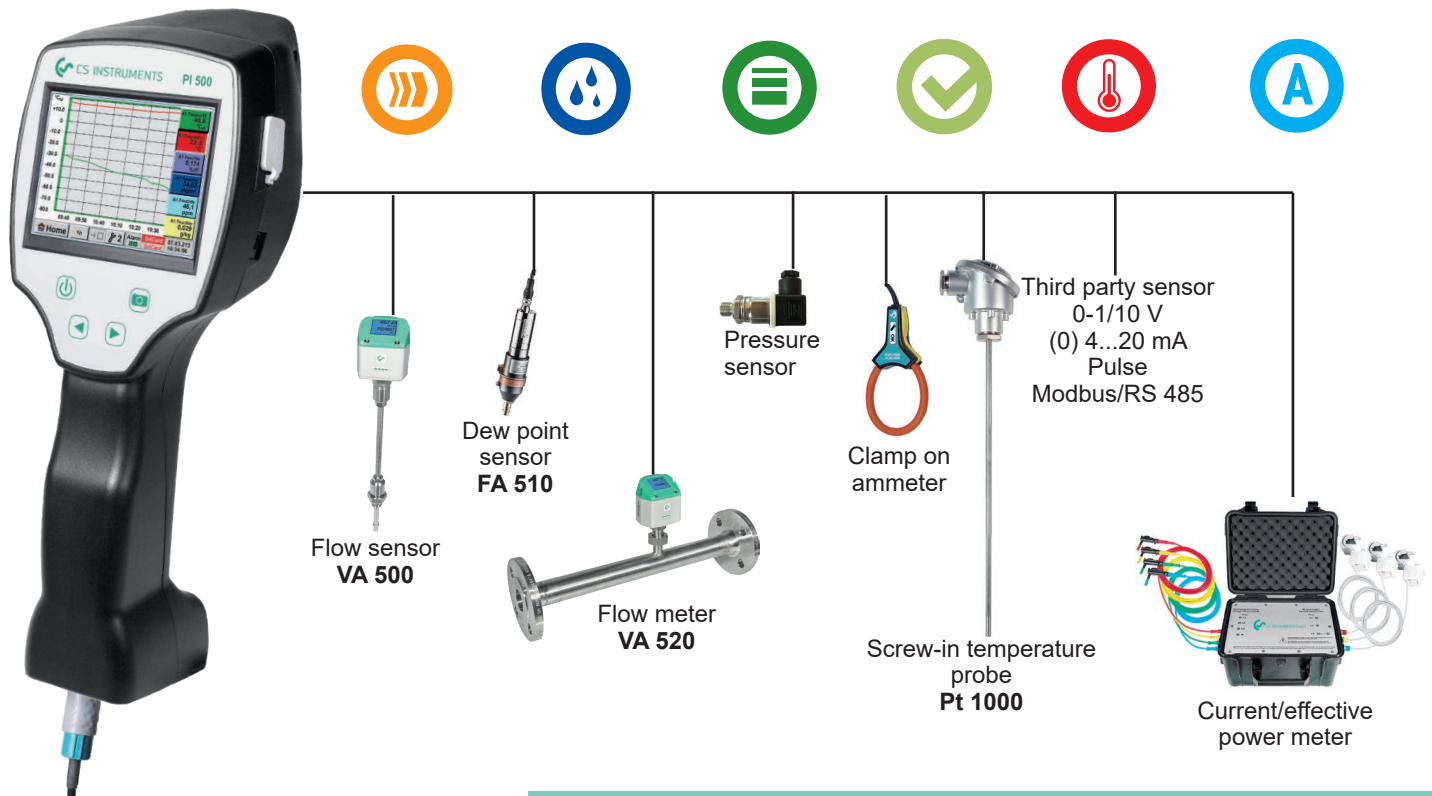
DewPoint	
-46.3	
°Ctd	
A1f	A1d
8.18 ppm	44.88 mg/m ³
A1c	A1a
Tem	Pressure
25.01 °C	6.540 bar

All physical parameters of moisture measurement are calculated automatically.

Logger settings								
Time interval (sec)								
1	2	5	10	15	30	60	120	15
<input checked="" type="checkbox"/> force new record file								
Comment: <input type="text" value="Dryer Trockener 13"/>								
Logger stopped								
<input checked="" type="checkbox"/> timed Start	<input checked="" type="checkbox"/> timed Stop							
START	STOP	12:26:00 - 06.0	13:28:00 - 06.0					
Remaining logger capacity = 9999 days								
Logging: 0 channels selected								
time interval (min) 1 sec								
Back								

It is possible to store up to 100 million measured values. Each measurement can be stored with a comment, e.g. measuring site name. The time interval can be freely determined.

PI 500 - Hand-held instrument with large sensor selection



INPUT SIGNALS	
Current signals internal or external power supply	(0...20mA/4...20mA)
Measuring range	0...20 mA
Resolution	0.0001 mA
Accuracy	$\pm 0.03 \text{ mA} \pm 0.05 \%$
Input resistance	50 Ω
Voltage signal:	(0...1 V)
Measuring range	0...1 V
Resolution	0.05 mV
Accuracy	$\pm 0.2 \text{ mV} \pm 0.05 \%$
Input resistance	100 k Ω
Voltage signal	(0...10 V / 30 V)
Measuring range	0...10 V
Resolution	0.5 mV
Accuracy	$\pm 2 \text{ mV} \pm 0.05 \%$
Input resistance	1 M Ω
RTD Pt 100	
Measuring range	-200...850°C
Resolution	0.1°C
Accuracy	$\pm 0.2^\circ\text{C}$ (-100...400°C) $\pm 0.3^\circ\text{C}$ (further range)
RTD Pt 1000	
Measuring range	-200...850°C
Resolution	0.1°C
Accuracy	$\pm 0.2^\circ$ (-100...400°C)
Impuls	
Measuring range	Min pulse length 500 μs frequency 0...1 kHz max. 30 VDC

DESCRIPTION	ORDER-NO.
PI500 portable measuring instrument with integrated data logger, incl. power supply	0560 0511
Option for PI 500: "mathematics calculation function" for 4 freely selectable „virtual" channels	Z500 5107
Option „Totalizer function for analogue signals"	Z500 5106
CS Basic – data evaluation graphically and in tabular form - reading of the measured data via USB or Ethernet, license for 2 workstations	0554 8040
Transport case	0554 6510

Further sensors can be found on pages 30 to 33

TECHNICAL DATA PI 500	
Display:	3.5" touchpanel TFT transmissive, graphics, curves, statistics
Interface:	USB interface
Power supply for sensors:	Output voltage: 24VDC $\pm 10\%$ Output current: 120 mA in continuous operation
Power supply:	Internal rechargeable Li-Ion batteries, charging time approx. 4 h, PI 500 continuous operation > 4h depending on power consumption for ext. sensor
Power adapter:	100 - 240 VAC / 50 - 60 Hz, 12 VDC - 1A, safety class 2 only for use in dry rooms
Dimensions:	82 x 96 x 245 mm
Housing material:	PC/ABS
Weight:	450 g
Operating temperature:	0...50°C Ambient temperature
Storage temperature:	-20 bis +70°C
EMC:	DIN EN 61326
Sensor input:	For connection of pressure and temperature sensors, current clamps, external sensors with 4 ... 20 mA, 0-10V, Pt 100, Pt 1000, Modbus
Memory Size:	8 GB - Memory card standard